

ORLA

) (*Dorchester Collection*

DUBAI

by OMNIYAT

O

R

Where city
meets sanctuary

L

A

S

A

Welcome to ORLA

Golden is a concept that captures the stature,
setting and ambiance of this project.

Gold symbolizes the first and the best, the primacy
of this project. It also embodies the shine of golden
sunlight, its calming and evocative reflection on the
water at sunrise and sunset.

N

D



W

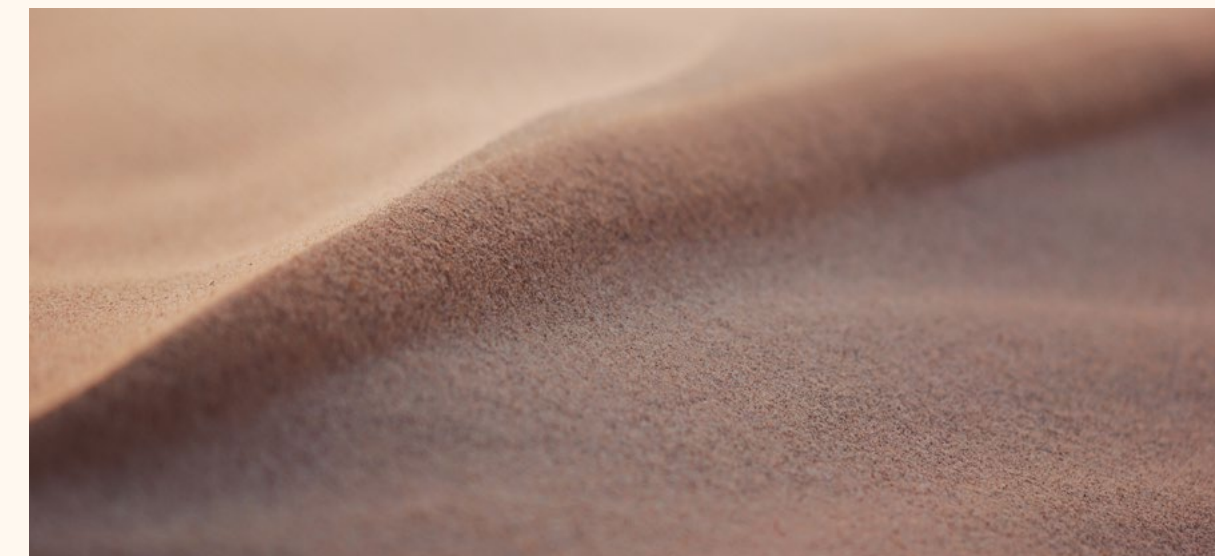
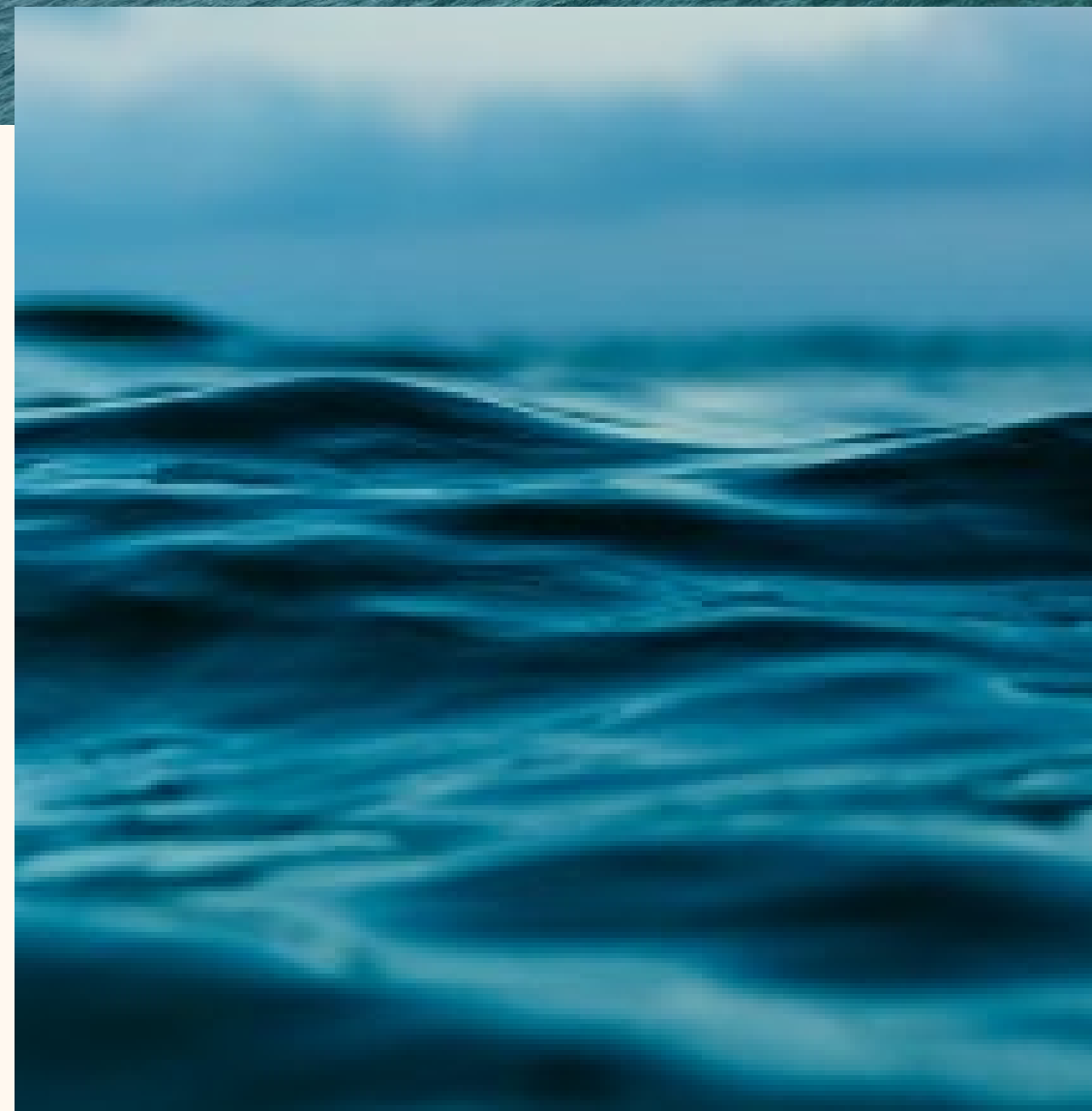
ORLA is inspired by the French word for gold, 'or', with 'la' added for a sense of brightness and light, it is also a Celtic word meaning Golden Princess

N D

At the apex of an icon, Palm Jumeirah

An iconic luxury peninsula with a unique connection to the sea, the Palm Jumeirah is a destination without peer, with many of Dubai's finest restaurants, clubs and beach resorts only moments away, while the rest of the wonders of Dubai lie within easy reach.

Situated on an 29,000 square-metre beachfront plot at the apex of the Palm's crescent, ORLA enjoys a privileged position and uninterrupted 270-degree views from Dubai's sky-scraping skyline to the turquoise waters of the Arabian Gulf that stretch to the horizon.



ORLA's access

A seamless journey onto the beginning of the west crescent of Palm Jumeirah, ORLA enjoys privileged access for the select few.





Sunset view

Marina view

Views

Uninterrupted 270 degree views from Dubai's skyline to the turquoise waters of the Arabian Gulf that stretch to the horizon.

ORLA

Dorchester Collection

DUBAI







Stunning from sea to sky

Your residence at ORLA is your exclusive escape, where indoor and outdoor blend seamlessly with sea and sky, as energising light streams through each residence creating eternal vistas from the moment the sun rises above the horizon to the last golden rays shimmering off the sea below.

Architecture at its finest, by **Foster + Partners**

OMNIYAT is once again working with pioneers in their field to craft ORLA's 3 interconnected towers. Internationally acclaimed, Foster + Partners has been selected as architect for the produce the staggered towers that are linked together to create a single dramatic form.

Foster + Partners is a global studio for sustainable architecture, urbanism, engineering and design, founded by Norman Foster in 1967. With offices across the world, the practice works as a single entity that is both ethnically and culturally diverse, with people central to all our endeavours.



A lifestyle beyond compare

Offering the finest amenities and five-star service, for the pleasure of residents of ORLA's 86 residences, 3 sky palaces, one sea view luxury mansion and one beach side luxury mansion, you will find privacy, prestige and personalised service from the moment you set foot in the vast, elevated lobby.







In harmony with nature

ORLA immerses you in balance and beauty, fostering a deep connection with your space and surroundings. The architecture is conceptualised through the lens of natural elements, integrating flowing water features and lush greenery to erase boundaries and let positive energy flow through the property.

Organic by design, ORLA's towers are linked together to optimise the wind flow to assist in channelling the cooling breezes to the residences and situated to allow residents to enjoy both sunrise and sunset experiences.





Residences that stand apart

With each residence carefully positioned and designed to beautifully blend indoor and outdoor spaces and create vantage points to capturing the many magnificent views across the facilities and to the city beyond, you will be left in awe at the ever-shifting seascapes that greet you around every corner.





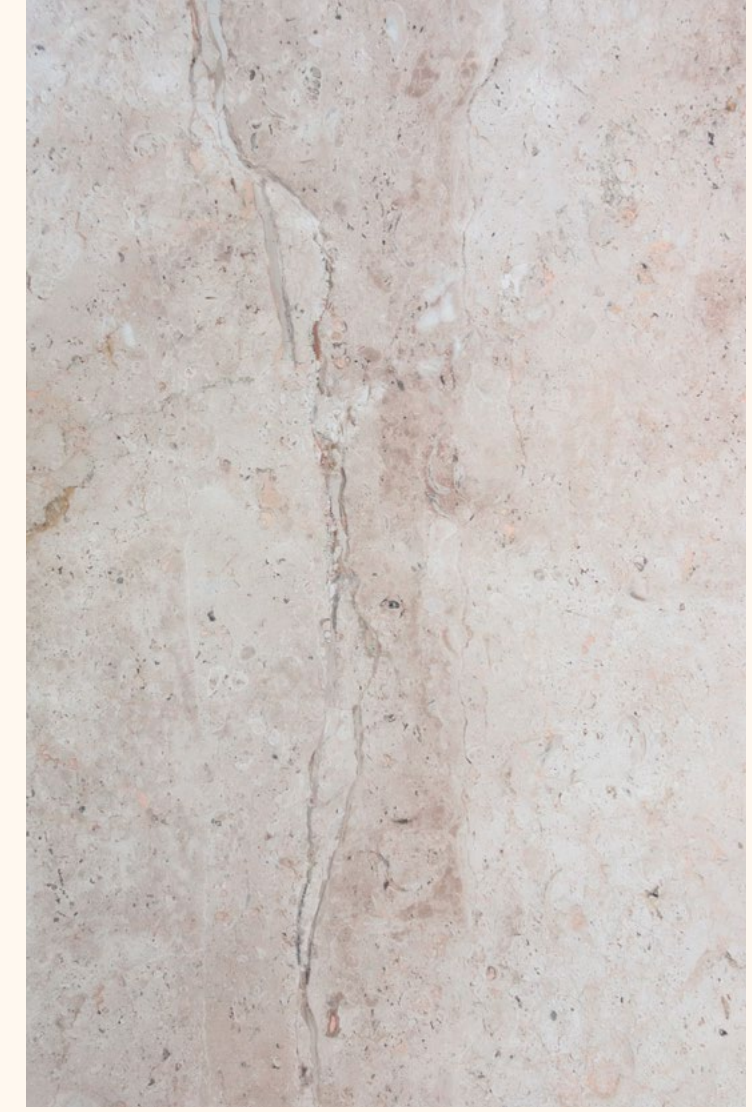
An arrival to remember

Each ORLA residence has a seamless arrival experience unique to each home with the discerning choice of a direct lift arrival experience, stepping from lift into your light filled residence within moments, for the most impressive entrance. Alternative front door entrances are also available, so you still have the freedom to choose how guests can enter your ORLA residence.

Once you have arrived into your private paradise you will be welcomed by full floor to ceiling windows, double height spaces of up to 6.5 metre, and huge terraces with landscaping all around.

Larger units will have private swimming pools on their terraces, enthralled by a vista of city and sea.





Indoor and outdoor living

Indoor outdoor living is maximized through floor to ceiling windows, oversized glass glazing and sumptuous terraces with grand spaces to seamlessly blend the natural elements of sun sea and expansive views with the elegant interiors



No two are quite alike

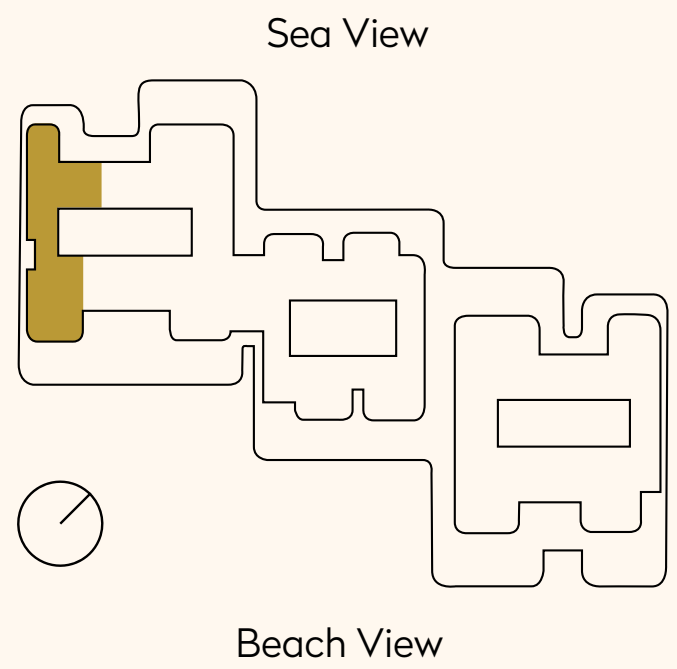
ORLA's 86 tower residences and 3 sky palaces are a mix of two, three and four-bedroom units floating above the resort and shimmering sea. Each have a unique layout spread over one or two storeys, ensuring the best use of each space and providing an array of options to suit every resident's individual desires.

- 16 Two Bedroom Simplex – 2,799 to 4,299 sq. ft.
- 17 Three Bedroom Simplex – 3,181 to 4,435 sq. ft.
- 16 Three Bedroom Duplex – 4,871 to 6,749 sq. ft.
- 6 Four Bedroom Simplex – 4,413 to 4,618 sq. ft.
- 13 Four Bedroom Duplex (Double Height Living) – 6,282 to 8,202 sq. ft.
- 18 Four Bedroom Duplex – 7,741 to 11,550 sq. ft.
- 3 Sky Palaces - 39,538 to 43,335 sq.ft.
- 2 Mansions - 43,000 sq. ft.

ORLA

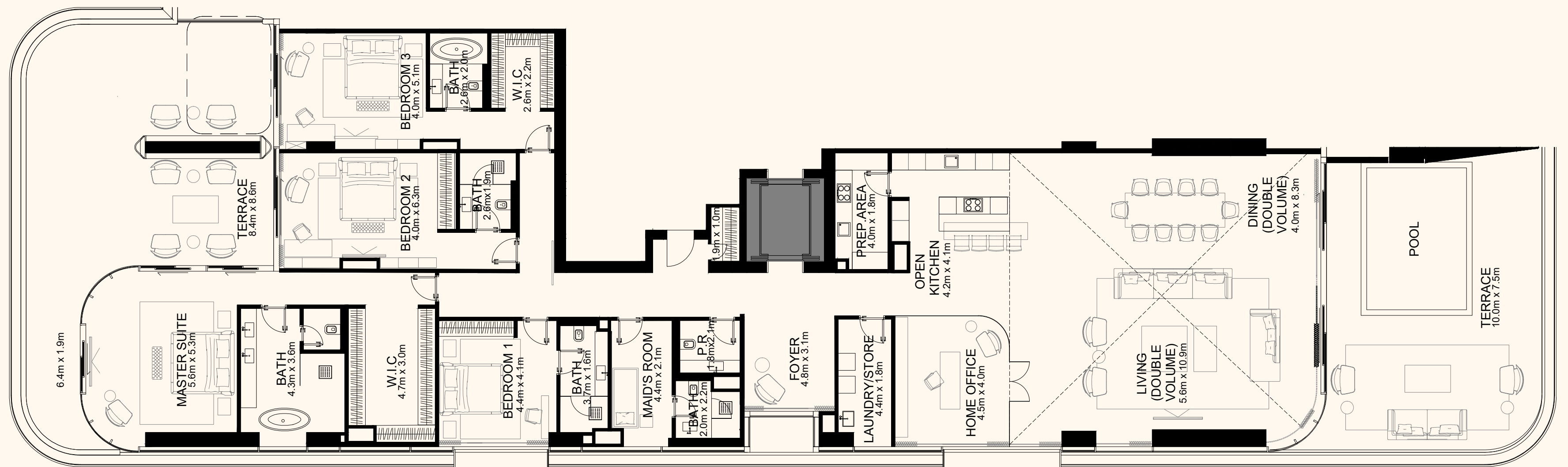
Dorchester Collection

DUBAI



Sea side

Beach side



Unit 401 – Type 1

4 Bedroom Simplex

Typical Duplex level floor

Residence 4,564 sq. ft.

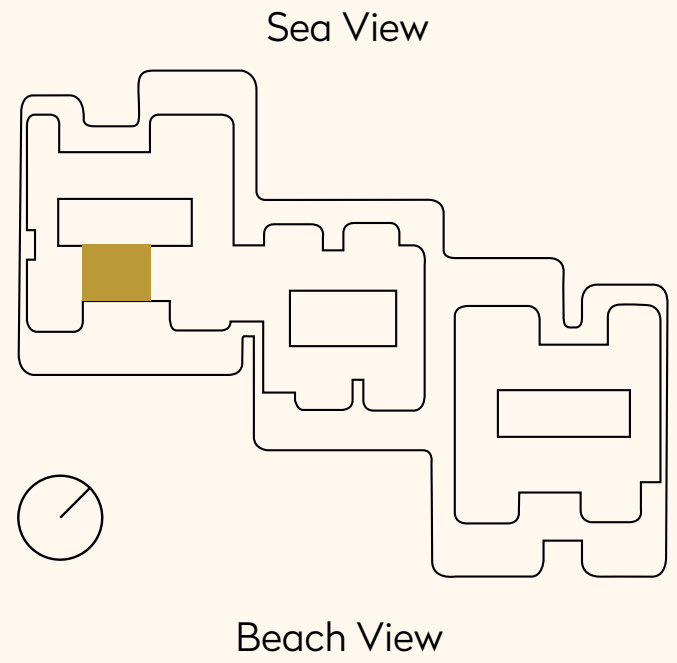
Terrace 1,970 sq. ft.

Total 6,535 sq. ft.

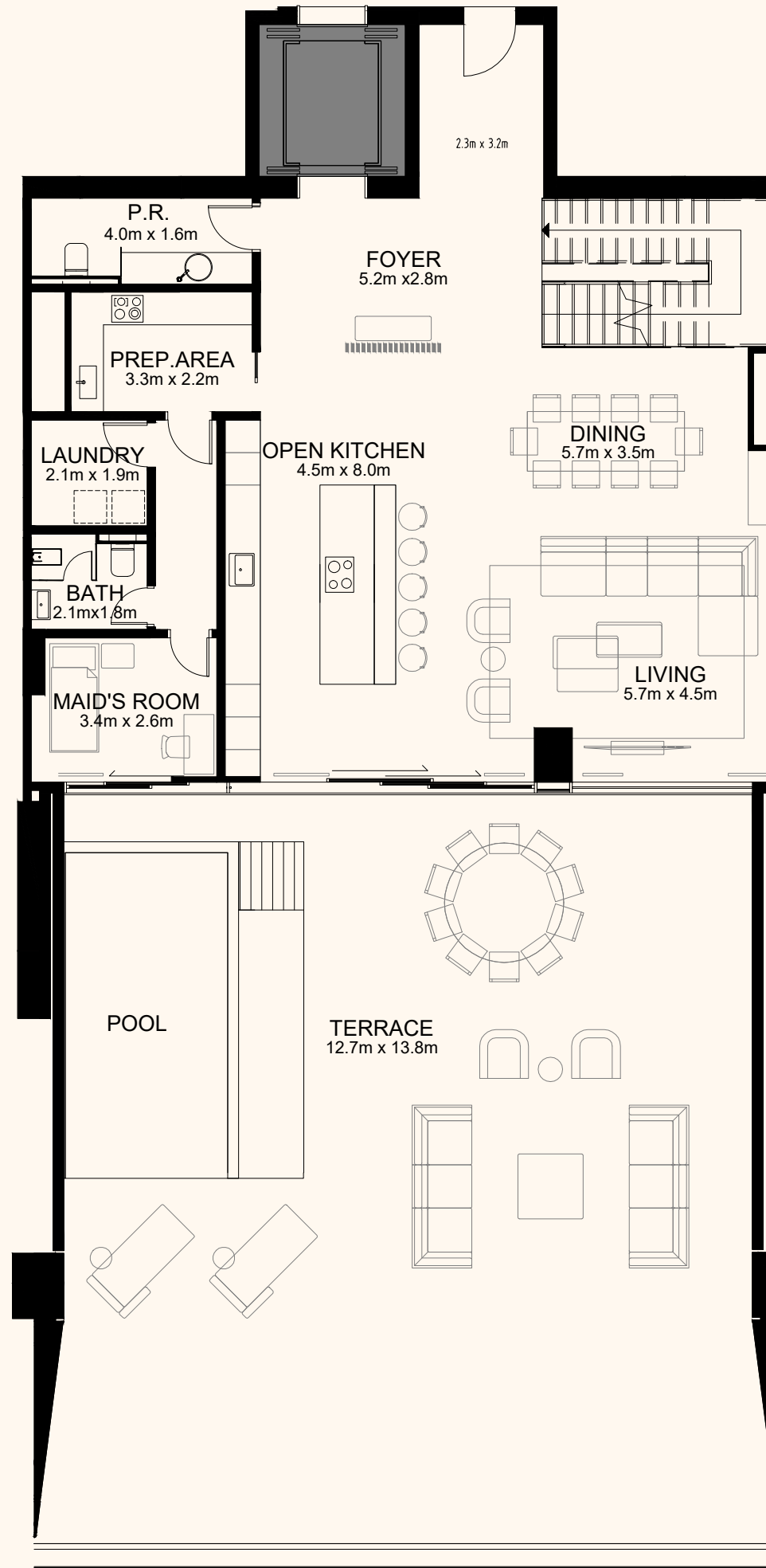
ORLA

Dorchester Collection

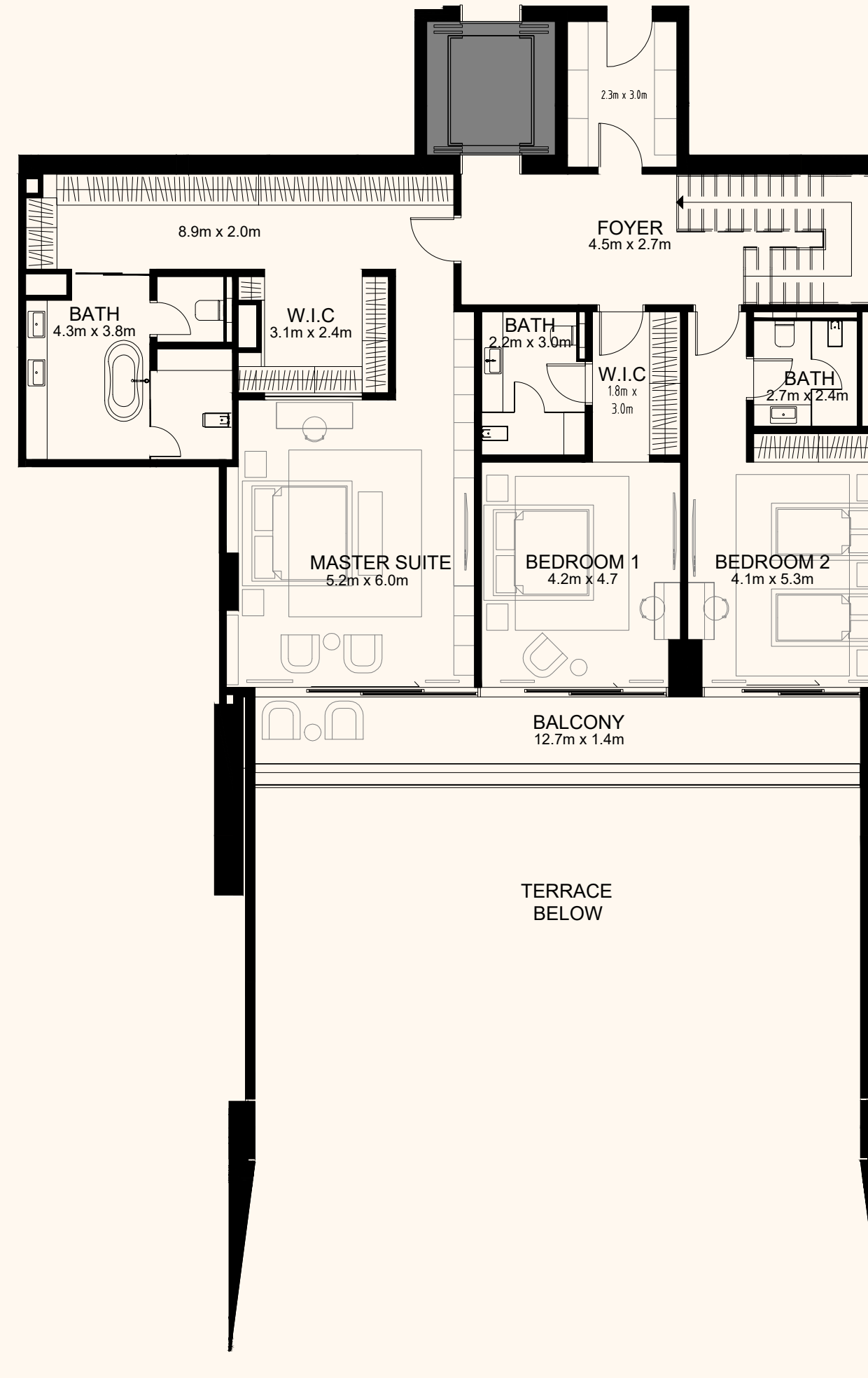
DUBAI



Lower floor



Upper floor



Beach side



Unit 402 – Type 2

3 Bedroom Duplex

Residence 3,509 sq. ft.

Terrace 2,293 sq. ft.

Total 5,802 sq. ft.

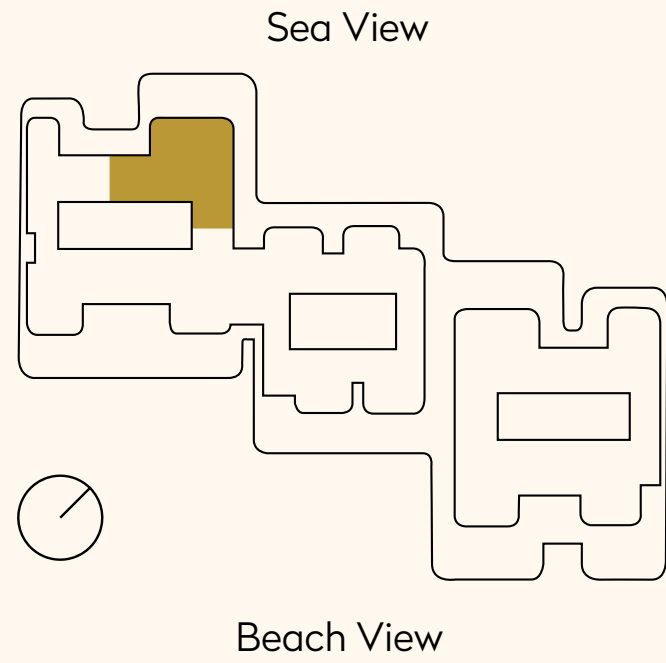
ORLA

Dorchester Collection

DUBAI



Sea side



Unit 403 – Type 3

4 Bedroom Simplex

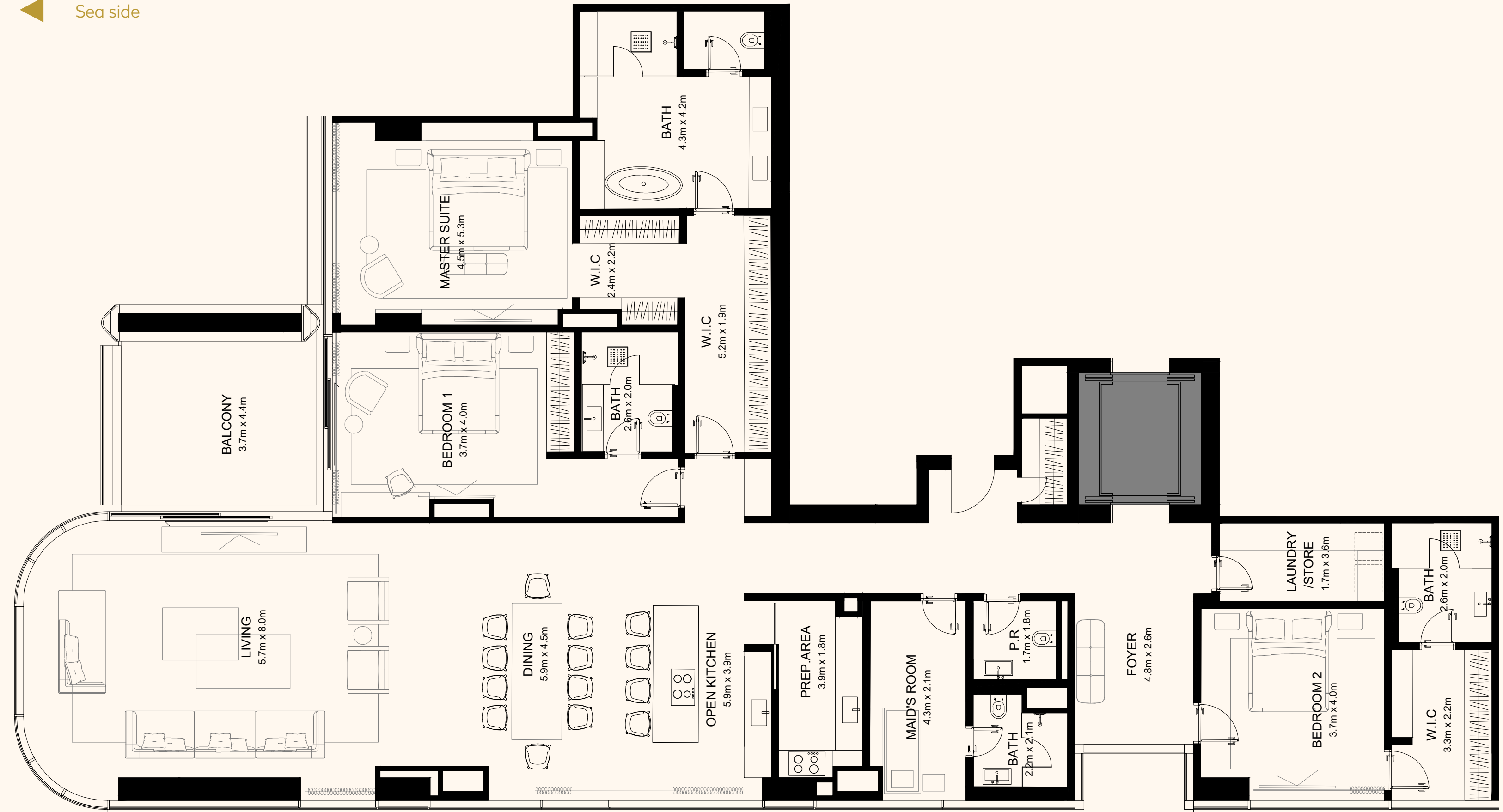
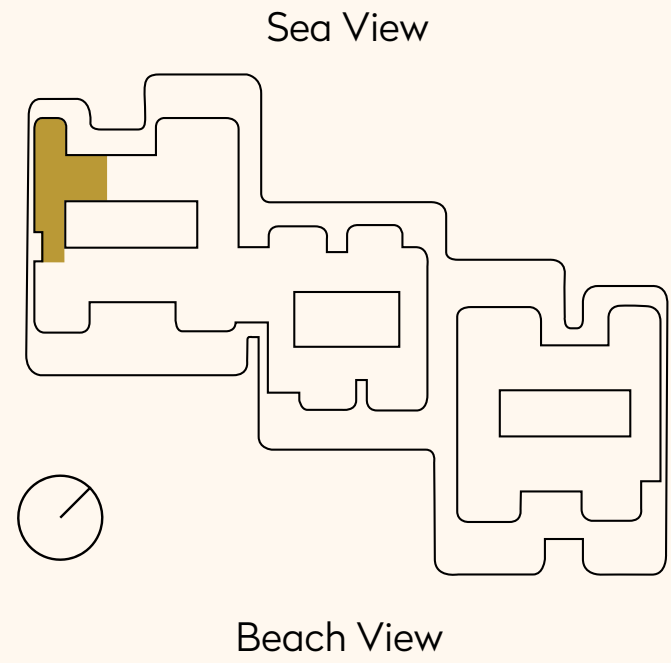
Residence	4,398 sq. ft.
Terrace	3,011 sq. ft.
Total	7,409 sq. ft.

ORLA

Dorchester Collection

DUBAI

Sea side



Unit 501 – Type 4

3 Bedroom Simplex

Residence 3,063 sq. ft.

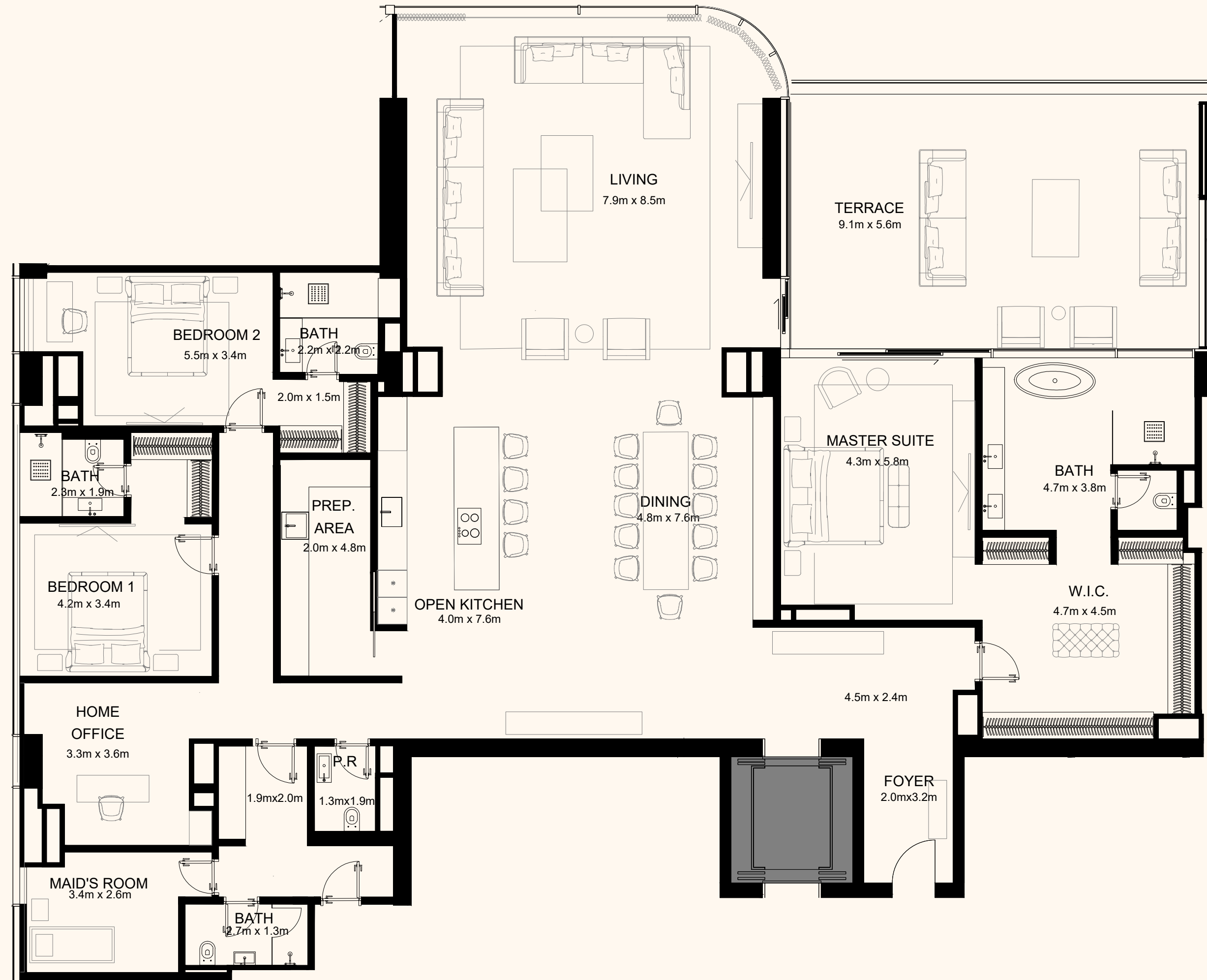
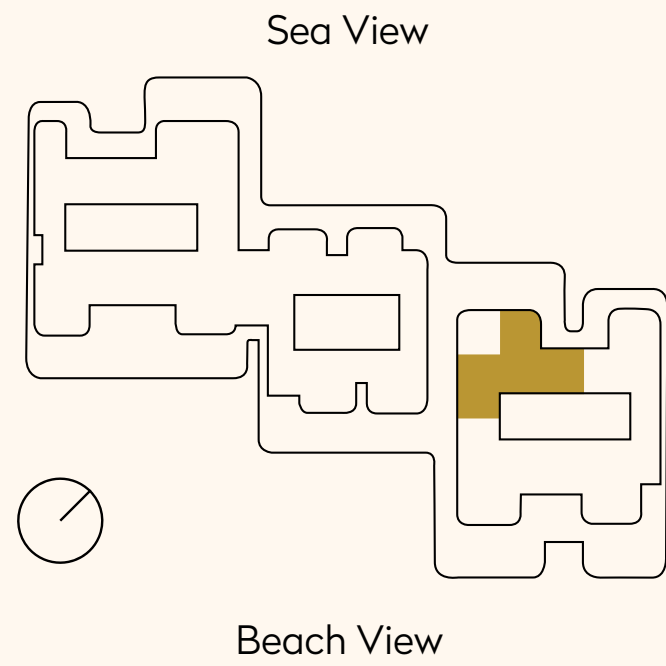
Terrace 213 sq. ft.

Total 3,276 sq. ft.

ORLA

Dorchester Collection

DUBAI



Unit 505 – Type 5

3 Bedroom Simplex

Residence	3,613 sq. ft.
Terrace	862 sq. ft.
Total	4,475 sq. ft.

Spectacular palaces in the sky

Crowning the top of the complex are 3 sky palaces. Up to 43,000 sq. ft. they have the opportunity to carry a multitude of functions. By utilising the breath-taking roof terrace gardens, the Sky Palaces can be used for functions ranging from corporate events and fundraising parties to more intimate dinners or simply functioning as a family home.





The Sky Palace will have the most exclusive experience with 360-degree views at the top of its 60 metre height limit. Each comes with its own drop off and individual lobby and exclusive lift with lifestyle coordinator office for exclusivity and security, along with lobby guest parking.

Beach Mansion

The Dubai dream comes alive at ORLA's lagoon and ocean mega-mansions, designed by Award-winning international architecture firm Soata. The mansions provide a unique vantage point straight down the trunk of Palm Jumeirah, allowing you to step down from your private pool veranda directly onto your verdant garden and the warm white sands of a sparkling beach below. Ideal as a fabulous family residence or the ultimate beachside second home, the mansions offer every imaginable convenience and amenity.

From vast living and dining spaces and a custom open kitchen on the ground floor, to beautiful ensuite bedrooms overlooking the resort-like facilities to the dedicated recreation room, private spa, bowling alley and exclusive 10 car garage in the lower ground floor – a life of leisure is yours at ORLA.





Internationally acclaimed interior designers

ORLA's award-winning world renowned interior designer provokes aesthetics that engage with colours, textures and materials to coalesce into the firm's captivating creations. It is known for creating individual, aesthetically stunning solutions employing unique styles and architecture.

















Landscape design

World-renowned landscape architects will be crafting, creating and building the ecosystem, weaving in layered stories that have people and the environment at the heart of design. The landscape amenity offers a discerning design, set in its own expanse of gardens and grand open spaces. Shaded forest courtyards with entry water fountains flow to the central well that nourishes the gardens in which spacious standalone guest pavilions, playground, terraced courts, cascades and pools rest. Views stretch across bosques of olives, acacias and palms forming the oasis and extend to the Dubai skyline on the horizon.

The landscape creates a comfortable microclimate and offers memorable experiences which are serene and timeless, designed to calm, soothe and rejuvenate restoring optimal wellbeing away from the hustle and bustle of Dubai.





A sense of belonging

Managed by

)C *Dorchester Collection*

The true meaning of 'home' goes beyond form and function – it is about being welcomed with open arms, appreciated for who you are, and cared for in the ways and at the times when you need it most.

) (*Dorchester Collection*

From the opening of the Dorchester Hotel in 1931, the name has come to define exceptional hospitality. Now the portfolio has expanded to ten hotels in the most exciting cities in the world; Paris, Milan, Rome, Los Angeles and now Dubai.

Dorchester Collection hotels are icons in their own right, each celebrating their own original character, enriched by timeless style and state-of-the-art facilities.





ORLA will be managed exclusively by Dorchester Collection, so you can expect the same services as you would expect to receive in Dorchester Collection's iconic hotels worldwide. This ranges from your residence concierge, available 24/7, to doorman and porter services, from personal valet to floristry services. You will receive world class service at your fingertips.



Amenities elevated

Your health and wellbeing are at the heart of the ORLA experience, with every aspect of a premium Dubai lifestyle carefully considered and crafted for your pleasure.

ORLA contains an abundance of resident-only experiences and facilities at your disposal, all managed by Dorchester Collection. Punctuated by breath-taking vistas and soothing sounds, you will find exclusive escapes for every taste, resident only beach club and a private cinema for up to 16 guests to a sophisticated cigar lounge and relaxation lounges throughout, contributing to a refined lifestyle that reflects your stature.



ORLA beach club

ORLA inhabits Dubai's first of its kind lifestyle experience with its exclusive resident-only beach club, sprawling across 150 metres of unspoiled Palm Jumeirah beach and crystal waters of the Arabian Gulf. Proudly placed next to the beach club is a large glistening infinity pool lined with comfortable sun loungers as well as luxurious cabanas, complemented with five-star services for all of your culinary desires.

Spend your day sipping on refreshing cocktails in privacy, and enjoy a poolside lunch with family and friends while you leave the hustle and bustle of Dubai behind you.






The height of sophisticated living

Residents enjoy exclusive use of ORLA's unbeatable amenities:

- Resident only beach club with indoor and outdoor dining
- Large infinity temperature controlled outdoor pool
- Indoor lap pool
- Children's pool and play area
- Pet grooming salon
- Spa with treatment rooms, salon, sauna & steam room
- State-of-the-art fitness centre
- Plunge pools and jacuzzis
- Cycling and yoga studios
- Business centre with 2 meeting rooms, boardroom and multi-functional events space
- Library lounge
- Cigar lounge
- Private cinema
- Bowling alley

An aerial photograph of a tropical coastline. The image shows a series of parallel, slightly curved lines of land and water. The water is a vibrant turquoise color, and the land is a lush green. The lines create a rhythmic pattern across the frame, suggesting a well-planned or natural coastal layout. The text is overlaid on the central part of the image.

With a plethora of first-class facilities both within each tower and across the lush waterfront grounds, ORLA residents enjoy the best aspects of a world-class retreat, all within the private confines of the property.

Location

Situated on the crescent of the world-renowned landmark, Palm Jumeirah, ORLA occupies a beachfront position right at the pinnacle of Dubai's archipelago.





OMNIYAT

Elevating Every Detail

One of the most visionary real-estate development and service groups in the Gulf Region, OMNIYAT creates living canvases of residential, commercial, hospitality and retail spaces for a one-of-a-kind premium experience. We approach the design, development and management of each OMNIYAT property as if it were a unique work of art.

Just as there is no mistaking a Picasso or a Van Gogh, there is no mistaking that you are anywhere but in an OMNIYAT property. We nurture and maintain close relationships with the world's leading architects, engineers, interior designers and artists. Each project is unique, designed to create a superior return on investment and to give every home owner the OMNIYAT guarantee of living in a bespoke space that reflects their personality, achievements and ambitions, offering an unrivalled lifestyle.

OMNIYAT